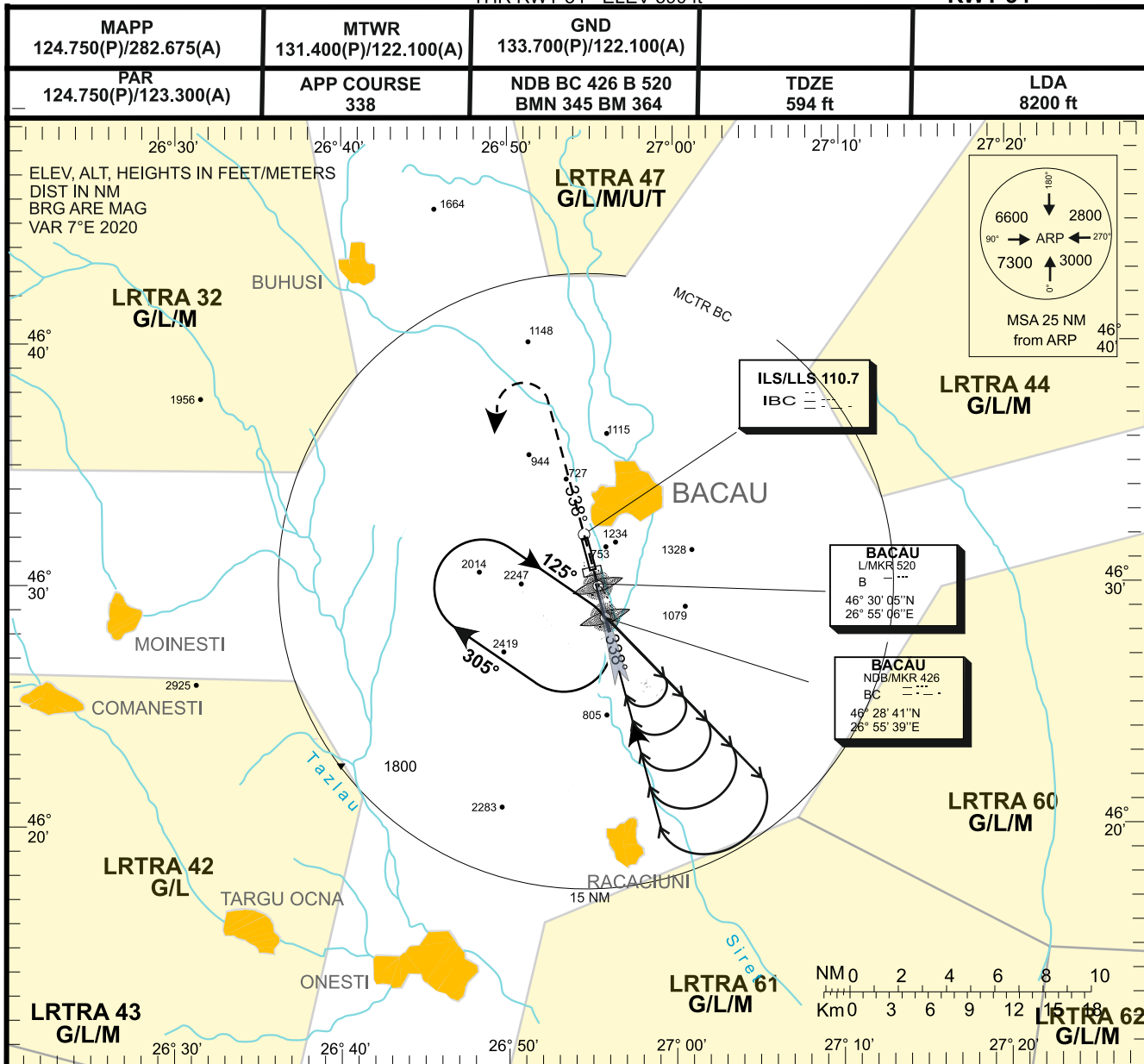


INSTRUMENT APPROACH CHART

AERODROME ELEV. 608 ft
HEIGHTS RELATED TO
THR RWY 34 - ELEV 590 ft

BACAU / Bacau (LRBC)
ILS/PAR cat. A/B/C/D/H
RWY 34

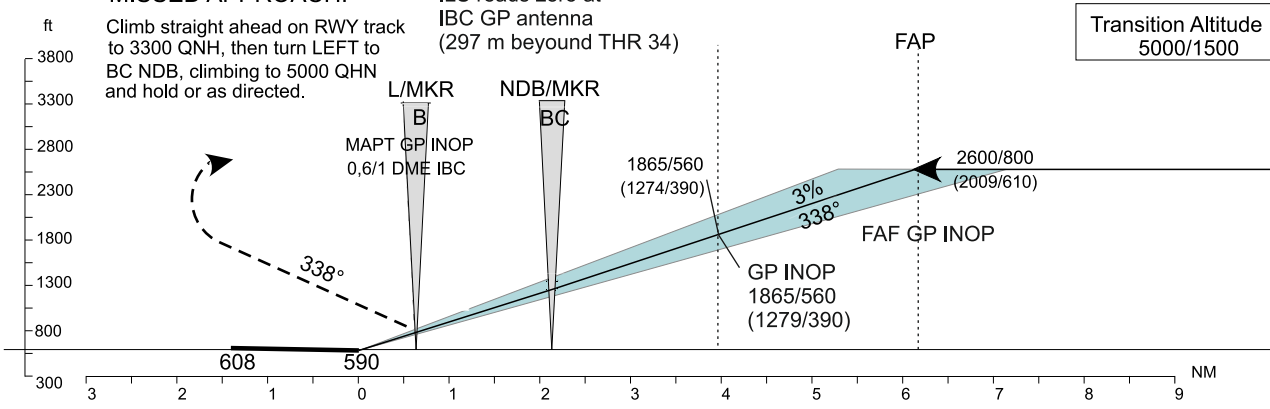


MISSED APPROACH:

Climb straight ahead on RWY track to 3300 QNH, then turn LEFT to BC NDB, climbing to 5000 QNH and hold as directed.

ILS reads zero at IBC GP antenna (297 m beyond THR 34)

Transition Altitude 5000/1500



CAT	ILS/PAR		ILS-GP INOP	
	DA/DH	VIS	MDA/MDH	VIS
A/H	807(240)/200(60)	550	830(250)/350(100)	1600
B	807(240)/200(60)	550	1000(300)/400(120)	1600
C	807(240)/200(60)	550	1030(310)/430(130)	2000
D	807(240)/200(60)	550	1100(330)/500(150)	3200
E	827(250)/220(70)	1000	1100(330)/500(150)	3200

	kts	70	90	100	120	140	160
FAF-MAPT 1.5 NM	min:s	1:17	1:00	0:54	0:45	0:39	0:34
Rate of descent	ft/min	372	478	531	637	743	849

Distance to TDZ	NM	1	2	3	4	5
Altitude	ft	909	1228	1546	1865	2183

**BACAU / Bacau (LRBC)
ILS/PAR
RWY 34**

AERONAUTICAL DATA TABULATION

ILS/PAR approach to RWY 34	
Fix/Point	Coordinates
BC NDB	46°28'41.20"N 026°55'38.7"E
B LM	46°30'05.20"N 026°55'05.6"E
THR RWY 34	46°30'39.97"N 026°54'51.9"E
IBC LLZ	46°32'07.50"N 026°54'17.5"E
MAPT	46°30'14.20"N 026°55'02.0"E